

Premium Power.



PowerHouse Premium Chargers: Proven Technology, Built to Last

PowerHouse Premium chargers deliver the reliability and low cost of operation based on a proven three-transformer ferroresonant design. The superior quality and reliability represents a real value for even the most demanding applications.

Key features include:

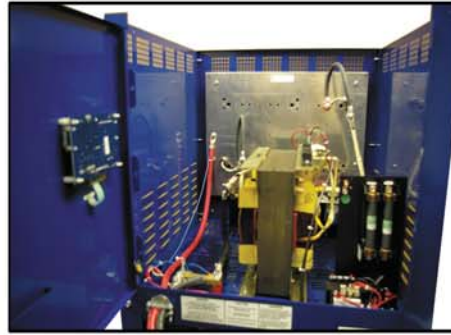
- ▶ Fully Automatic
- ▶ Fail-Safe Operation
- ▶ Rugged Cabinet Design
- ▶ Designed for Three Shift Operations
- ▶ Highly Reliable with Low Maintenance



The Power in PowerHouse Premium

Designed to Last

- Component layout minimizes temperatures
- Lift-Off front door for easy service access
- Over-sized heat sinks to reduce diode temperatures
- AC and DC components are mounted to minimize transient noise
- AC Input Taps make Voltage changeovers quick



271 Control

Standard Control with a feature set suitable for fleets of any size



272 Control

Upgrade to this feature-rich control to deploy such advanced functions as auto-watering, TOBi Wi-Z compatibility, charge event logging & energy management



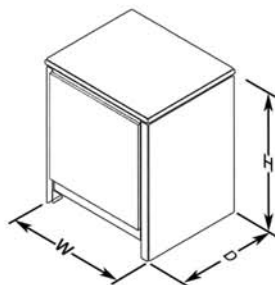
PowerHouse Premium Specifications

Cells	Amp Hour Capacity		Single Phase								Three Phase						
	AH	Range	Model Number	DC Output Amps	AC Input Amps				Case Size	Shipping Weight	Model Number	DC Output Amps	AC Input Amps			Case Size	Shipping Weight
					120V	208V	240V	480V					208V	240V	480V		
6	260	181-260	PHP6-260*1	47	6.6	3.8	3.3	1.6	A	70							
	380	261-380	PHP6-380*1	69	9.7	5.6	4.8	2.4	A	79	PHP6-380*3	69	3.2	2.8	1.4	B	164
	475	381-475	PHP6-475*1	86	12.0	6.9	6.0	3.0	A	82	PHP6-475*3	86	4.0	3.5	1.7	B	164
	600	476-600	PHP6-600*1	108	15.1	8.7	7.6	3.8	A	88	PHP6-600*3	108	5.0	4.4	2.2	B	164
	750	601-750	PHP6-750*1	135	18.9	10.9	9.5	4.7	A	88	PHP6-750*3	135	6.3	5.5	2.7	B	164
	865	751-865	PHP6-865*1	156	21.8	12.6	10.9	5.5	B	168	PHP6-865*3	156	7.3	6.3	3.2	B	192
	965	866-965									PHP6-965*3	174	8.1	7.0	3.5	B	182
	1050	966-1050									PHP6-1050*3	189	8.8	7.6	3.8	B	182
1200	1051-1200									PHP6-1200*3	216	10.1	8.7	4.4	B	191	
1450	1201-1450									PHP6-1450*3	261	12.2	10.6	5.3	B	202	
12	260	181-260	PHP12-260*1	47	13.2	7.6	6.6	3.3	A	82							
	380	261-380	PHP12-380*1	69	19.3	11.1	9.7	4.8	A	96	PHP12-380*3	69	6.4	5.6	2.8	B	164
	475	381-475	PHP12-475*1	86	-	13.9	12.0	6.0	B	160	PHP12-475*3	86	8.0	7.0	3.5	B	182
	600	476-600	PHP12-600*1	108	-	17.4	15.1	7.6	B	173	PHP12-600*3	108	10.1	8.7	4.4	B	191
	750	601-750	PHP12-750*1	135	-	21.8	18.9	9.5	B	173	PHP12-750*3	135	12.6	10.9	5.5	B	202
	865	751-865	PHP12-865*1	156	-	25.2	21.8	10.9	B	190	PHP12-865*3	156	14.6	12.6	6.3	B	220
	965	866-965	PHP12-965*1	174	-	28.1	24.4	12.2	B	207	PHP12-965*3	174	16.2	14.1	7.0	B	220
	1050	966-1050									PHP12-1050*3	189	17.6	15.3	7.6	B	220
1200	1051-1200									PHP12-1200*3	216	20.2	17.5	8.7	B	243	
1450	1201-1450									PHP12-1450*3	261	24.4	21.1	10.6	B	268	
1750	1451-1750									PHP12-1750*3	315	29.4	25.5	12.7	C	307	
18	260	181-260	PHP18-260*1	47	19.7	11.4	9.9	4.9	A	96							
	380	261-380	PHP18-380*1	69	-	16.7	14.5	7.2	A	160	PHP18-380*3	69	9.7	8.4	4.2	B	191
	475	381-475	PHP18-475*1	86	-	20.8	18.1	9.0	B	190	PHP18-475*3	86	12.0	10.4	5.2	B	191
	600	476-600	PHP18-600*1	108	-	26.2	22.7	11.3	B	190	PHP18-600*3	108	15.1	13.1	6.6	B	220
	750	601-750	PHP18-750*1	135	-	32.7	28.4	14.2	B	227	PHP18-750*3	135	18.9	16.4	8.2	B	243
	865	751-865	PHP18-865*1	156	-	37.8	32.8	16.4	B	227	PHP18-865*3	156	21.8	18.9	9.5	B	243
	965	866-965	PHP18-965*1	174	-	42.2	36.5	18.3	B	227	PHP18-965*3	174	24.4	21.1	10.6	B	268
	1050	966-1050									PHP18-1050*3	189	26.5	22.9	11.5	B	268
1200	1051-1200									PHP18-1800*3	216	30.3	26.2	13.1	B	307	
1450	1201-1450									PHP18-1450*3	261	36.6	31.7	15.8	C	466	
1750	1451-1750									PHP18-1750*3	315	44.1	38.2	19.1	C	466	
24	260	181-260	PHP24-260*1	47	-	15.2	13.2	6.6	A	96							
	380	261-380	PHP24-380*1	69	-	22.3	19.3	9.7	A	160	PHP24-380*3	69	9.7	8.4	4.2	B	191
	475	381-475	PHP24-475*1	86	-	27.8	24.1	12.0	B	190	PHP24-475*3	86	12.0	10.4	5.2	B	191
	600	476-600	PHP24-600*1	108	-	34.9	30.2	15.1	B	190	PHP24-600*3	108	15.1	13.1	6.6	B	220
	750	601-750	PHP24-750*1	135	-	43.6	37.8	18.9	B	227	PHP24-750*3	135	18.9	16.4	8.2	B	243
	865	751-865	PHP24-865*1	156	-	-	43.7	21.8	B	227	PHP24-865*3	156	21.8	18.9	9.5	B	243
	965	866-965	PHP24-965*1	174	-	-	-	24.4	B	227	PHP24-965*3	174	24.4	21.1	10.6	B	268
	1050	966-1050									PHP24-1050*3	189	26.5	22.9	11.5	B	268
1200	1051-1200									PHP24-1800*3	216	30.3	26.2	13.1	B	307	
1450	1201-1450									PHP24-1450*3	261	36.6	31.7	15.8	C	466	
1750	1451-1750									PHP24-1750*3	315	44.1	38.2	19.1	C	466	
2200	1751-2200																

*Requires AC Voltage Code

AC Voltage	10	30
120/208/240	A	N/A
208/204/480	B	B
480/575	N/A	K

Case	Height		Width		Depth	
	in	cm	in	cm	in	cm
A	20.5	52	17.3	44	14.8	37.6
B	26	66	24.3	61.7	24.6	65.5
C	28	71.1	38.3	97.2	27.6	70.1



1445 Majestic Drive
P.O. Box 990
Fremont, OH 43420 USA
419-334-7181
Fax 419-334-7124

www.powerhousechargers.com