



No charger is more efficient or safer for your battery fleet.

## USA Made!

**LATEST TECHNOLOGY!**

Changing batteries takes time away from moving product and can lead to accidents. Our HF series high frequency chargers allow you to keep the battery in the truck saving time and keeping the work place safe.

Cooler batteries last longer. The HF series consistently delivers the coolest charge to the battery even at higher charge rates!

Intelligent, modular design. If a module fails the others will continue to operate.

Constant communication between battery and charger for perfect charge every time.

Graphic Icon display allows quick identification of charge status and "ready" battery.

24 pre-loaded charger algorithms to charge any battery chemistry, including Lithium Ion.

California Energy Commission CEC and Underwrites Labs listed. 

**INTELENT CHARGING**

# HF Series Chargers

## Conventional, Opportunity and Fast

**BENEFITS**

Cooler , safest charge for your battery

Eliminate battery changes.

Increase driver productivity.

Lower Energy costs!

Peak efficiency 94%. Power Factor 95%



**FEATURES**

Less time on charge.

Multi voltage capable.

Conventional, Opportunity or fast charge

Small, lightweight modular design



Phone: 314-739-1414  
 Fax: 314-739-1277  
 E-mail: sales@chargingti.com  
 www.chargingti.com

Charging Technologies Inc  
 4328 Bridgeton Industrial Drive  
 Bridgeton, Missouri 63044

# High Frequency charging solutions

# High Frequency Charger selector Guide

CHARGER COMMUNICATION



P46-303 Control  
Wireless  
Communication from  
charger to computer.



BATTERY COMMUNICATION



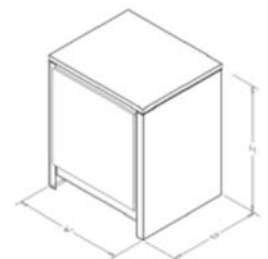
TOBi PI Wi-Z Wireless  
Communication between  
battery and charger and  
battery and computer.

Cells	DCV *	MAX DC AMPS	240/3/60 ACA	480/3/60 ACA	600/3/60 ACA	Model number	Standard 8 hr charge Battery range	25% OPP. charge Battery range	40% FAST. charge Battery range
12	24	65	5.0	2.5	2.0	24-1A-*3	0-390	0-260	0-160
12	24	130	9.8	4.9	4.0	24-1B-*3	391-780	261-520	161-330
12	24	195	14.8	7.4	6.0	24-1A1B-*3	781-1170	521-780	331-490
12	24	260	19.6	9.8	7.9	24-2B-*3	1171-1570	781-1040	491-650
12	24	325	24.6	12.3	9.8	24-1A2B-*3	1571-1960	1041-1300	651-810
12/18	24/36	50	5.6	2.8	2.2	36-1A-*3	0-300	0-200	0-130
12/18	24/36	100	11.2	5.6	4.5	36-1B-*3	301-600	201-400	131-250
12/18	24/36	150	16.8	8.4	6.7	36-1A1B-*3	601-900	401-600	251-380
12/18	24/36	200	22.4	11.2	9.0	36-2B-*3	901-1200	601-800	381-500
12/18	24/36	250	28.0	14.0	11.2	36-1A2B-*3	1201-1510	801-1000	501-630
12/18	24/36	300	33.6	16.8	13.4	36-3B-*3	1511-1810	1001-1200	631-750
12/18	24/36	350	39.2	19.6	15.7	36-1A3B-*3	1811-2110	1201-1400	751-880
12/18	24/36	400	44.8	22.4	17.9	36-4B-*3	2111-2410	1401-1600	881-1000
12/18/24	24/36/48	40	5.6	2.8	2.2	48-1A-*3	0-240	0-160	0-100
12/18/24	24/36/48	80	11.2	5.6	4.5	48-1B-*3	241-480	161-320	101-200
12/18/24	24/36/48	120	16.8	8.4	6.7	48-1A1B-*3	481-725	321-480	201-300
12/18/24	24/36/48	160	22.4	11.2	9.0	48-2B-*3	726-965	481-640	301-400
12/18/24	24/36/48	200	28.0	14.0	11.2	48-1A2B-*3	966-1200	641-800	401-500
12/18/24	24/36/48	240	33.6	16.8	13.4	48-3B-*3	1201-1445	801-960	501-600
12/18/24	24/36/48	280	39.2	19.6	15.7	48-1A3B-*3	1446-1685	961-1120	601-700
12/18/24	24/36/48	320	44.8	22.4	17.9	48-4B-*3	1686-1925	1121-1280	701-800
36/40	72/80	23	5.6	2.8	2.2	80-1A-*3	0-140	0-92	0-60
36/40	72/80	45	11.2	5.6	4.5	80-1B-*3	141-270	93-180	61-110
36/40	72/80	68	16.8	8.4	6.7	80-1A1B-*3	271-410	181-272	111-170
36/40	72/80	90	22.4	11.2	9.0	80-2B-*3	411-540	272-360	171-230
36/40	72/80	113	28.0	14.0	11.2	80-1A2B-*3	541-680	361-452	231-280
36/40	72/80	135	33.6	16.8	13.4	80-3B-*3	681-810	453-540	281-340
36/40	72/80	158	39.2	19.6	15.7	80-1A3B-*3	811-950	541-632	341-400
36/40	72/80	180	44.8	22.4	17.9	80-4B-*3	951-1080	633-720	401-450

\* A/C line  
240 = D Will operate at 208 /3/60 with 25% reduction in output  
480 = E  
600 = AG



CASE DIMENSIONS						
CASE	HEIGHT		WIDTH		DEPTH	
	IN	CM	IN	CM	IN	CM
900	22.60	66.04	13.13	33.34	14.63	37.15



Phone: 314-739-1414  
Fax: 314-739-1277  
E-mail: sales@chargingti.com  
www.chargingti.com

Charging Technologies Inc  
4328 Bridgeton Industrial Drive  
Bridgeton, Missouri 63044