

# Power That Moves You.

*The Power Behind Performance*



[www.crownbattery.com](http://www.crownbattery.com)

# Some Claim That Beauty Is Only SKIN DEEP...

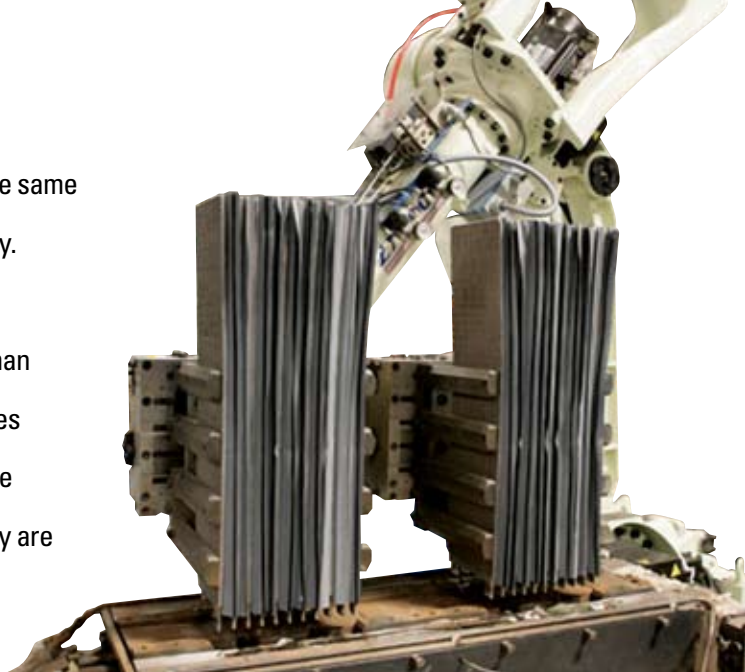
## *We Believe It Is What's INSIDE That Counts.*



**S**

ome may claim all batteries are the same as, or better than, a Crown Battery.

There is a difference in industrial batteries – and, at Crown Battery, for more than 85 years, we can demonstrate that all batteries are not the same. We challenge you to explore “deeper” inside your batteries. And, how they are made is as important as what’s **INSIDE**.



Some battery manufacturers may claim to be the “heaviest” or to have the “thickest” plates. Although both are important, we can demonstrate that we provide those features...and a lot more! Crown Batteries’ true beauty goes beyond the typical “skin deep” looks of some batteries. Beauty that goes all the way to the core. We can demonstrate those differences and how they benefit you.

### Some of Our Best Features Include:

- 1 Thick TBLS content energy-dense plates combined with the heaviest strap and inter-cell connections.
- 2 The best BALANCE of active material and POS/NEG plates in any comparable size battery.
- 3 A unique “Diamond Z” grid design which protects the highest amount of vertical current paths available today.
- 4 Posi-Wrap™ Plate System combines more wraps and protection than any other plate available today.



***This balance of power gives you greater value for your investment with longer battery life and better performance. Ultimately, this gives you...***

**More Balance. More Weight. More Uptime. More Moves. Less Hassle. All Crown.**

*The Power Behind Performance*



# Serving The World's Top Industries With Quality & Experience.



*Stationary  
Batteries*

*Industrial  
Battery  
Chargers*



*Mining  
Battery*



*Renewable  
Energy  
Storage*



*Material Handling  
Batteries*

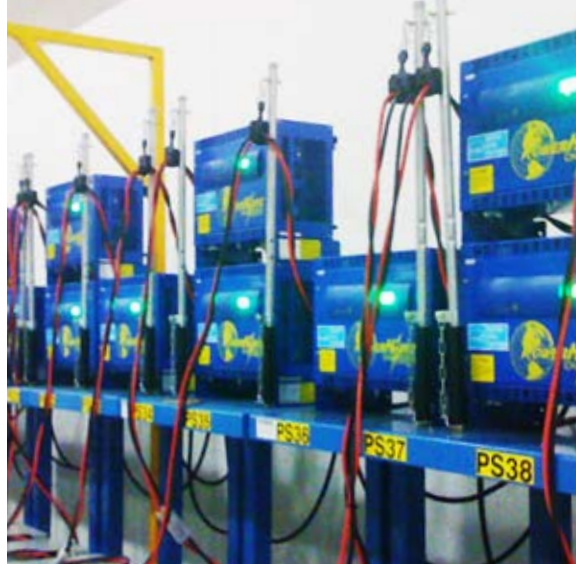


# POWER. LIFT.

## Material Handling

Whether you are lifting pallets higher, moving product greater distances, constantly loading and unloading trucks and need reliable power from your material handling equipment, you should consider an industrial battery from Crown Battery. Our batteries are offered in standard motive power configurations under numerous factory brands including Crown, C-Line, V-Line and Reaco, in lower maintenance setup with our H<sub>2</sub>Go series and in our widely known OFC series known as the choice for opportunity fast charging (OFC).

Our batteries consistently offer the best balance (not just greater weight) in the POS/NEG relationship which means better performance and longer life. Battery-powered equipment is now primarily the major use in the material handling world. Lead-acid batteries from Crown Battery provide the most overall cost-effective, safest, most dependable and tolerant power solution available on the market today.



# POWER. HOUSE.

## Battery Charging Applications

*PowerHouse offers a complete line of chargers for all types of material handling applications:*

**IHF** This state-of-the-art charger really can do it all – offering the highest efficiency available today. We have charging solutions for flooded and maintenance-free batteries, hot environments or cold storage, standard charge profiles as well as opportunity charge(OC) and Opportunity Fast Charging (OFC). Wireless data collection and battery communication options are available with the Batcom and Batcom Plus.

**SCR** Our new versatile SCR product line offers a full array of available features at a very attractive price. Auto-sensing multi-voltage DC output is available, as are programs for standard charging, cold storage and opportunity charging.

**Ferro-resonant** The traditional choice for durability is still available in our Ferro 100, IFR and FR series of chargers.



# POWER. HAUL.

## Mining Applications

Sometimes we take for granted the ability to safely and efficiently extract ores from within our precious planet and deliver them to the surface. Crown batteries are used by leading OEMs on all continents in a variety of mining equipment applications for coal and hard rock mines or in tunneling applications. Shuttling personnel safely throughout the mine with efficient and cost-effective electric power is another way Crown Battery leads the way in providing the best power solutions to the mining industry. So, if you need a battery that provides more hauls with the longest life at the lowest cost per haul, it's time you haul with power from Crown Battery.



©2011 Joy Mining Machinery



# POWER. TRAIN.

## Industrial Applications

Crown Battery offers a full line of railroad starting batteries for any type of locomotive, large marine applications and stationary engine starting requirements. Our MD and UD products are considered the longest lasting, most durable railroad batteries available today. Our UDS product has virtually eliminated battery maintenance for three years, at an extremely attractive price. Crown Battery also supplies deep cycle batteries for railcar back-up emergency lighting requirements, as well as a full line of lead-acid railway signaling batteries.

# POWER. PLANT.

## Stationary Power

Crown Battery offers a full line of stationary power batteries for virtually any application, including central office and outside plant telecommunications, back-up power batteries for utilities, switchgear and control batteries for industrial applications, uninterruptible power supplies, emergency lighting and other applications. We offer flooded lead acid, AGM and gel technologies in both flat plate and tubular, as well as a full line of Plante cells for applications requiring a 25+ year design life. Crown Battery also offers a full line of stationary power electronics to provide power to these systems.



# POWER. STORE.

## Renewable Energy Storage

Crown Renewable Power is the most complete, dedicated array of renewable energy batteries compared to other manufacturers. This line features battery capacity ratings that range from 120 to 3690 ampere-hours (100 hour rate). This "Heavyweight" delivers the most energy-dense plates using more active lead material. That means stronger battery performance and longer battery life to you – the RE system user. No other RE battery manufacturer takes this "Respons-Ability" more seriously. So, if you want your investment in solar, wind or other renewable energy to pay off – consider energy storage from Crown Battery.

## WARRANTY SUPPORT:

As important as is the construction of an industrial battery, so is the warranty that supports the products we manufacture. Some claim their warranty support is as good as all others. Ultimately, you have to decide if your supplier truly stands behind their offering. While our Crown Battery may cost a little more, the value of our support protects your investment. When it comes time to honor a warranty, no other industrial battery manufacturer offers a simpler certificate. Properly match our batteries to approved chargers and maintain the batteries as specified and you will find that no one stands taller and prouder behind our products. Ask our customers who honor their industrial warranties consistently – and you'll hear one name, consistently...Crown Battery.

## Crown Battery Industrial Products Group

- ▶ Material Handling
- ▶ Mining Applications
- ▶ Railroad Starting
- ▶ Telecommunications
- ▶ UPS Standby
- ▶ Control – Switchgear
- ▶ Renewable Energy Storage
- ▶ Off-Grid Storage
- ▶ Battery Chargers
- ▶ Power Electronics

# Service & Support

We are represented by MORE factory-authorized, independently motivated industrial battery sales and service centers in North America than anyone else. Therefore, you know your investment in Crown Batteries is properly installed, configured and set up for MORE years of “less-hassle” power for your equipment. That means MORE uptime, MORE moves, MORE support for MORE value and guaranteed satisfaction.



*Industrial  
Forklift Battery*



*Industrial  
Battery Charger*

***The Power Behind Performance***



1445 Majestic Drive • P.O. Box 990  
Fremont, Ohio 43420-0990  
419-334-7181  
Fax: 419-334-7124  
sales@crownbattery.com  
www.crownbattery.com

